

INTRODUCTION
TO

HARI
STYLE OF ACUPUNCTURE

Takayuki Koei Kuwahara Lic. Ac.
President of The Hari Society

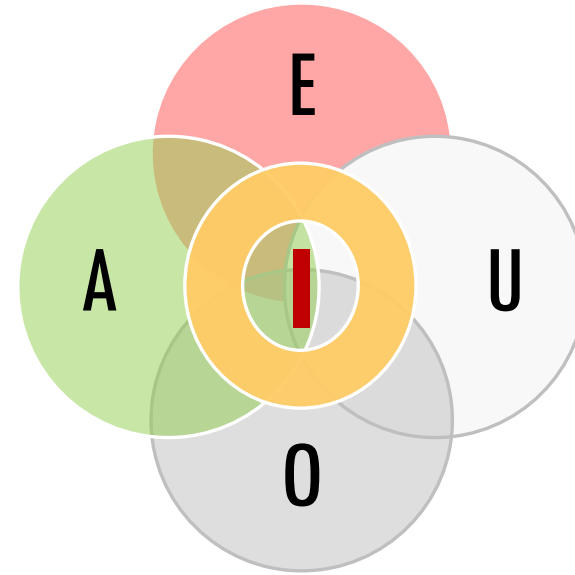


ESSENCE OF HARI

KI AND FIVE
PHASES
KOTOTAMA

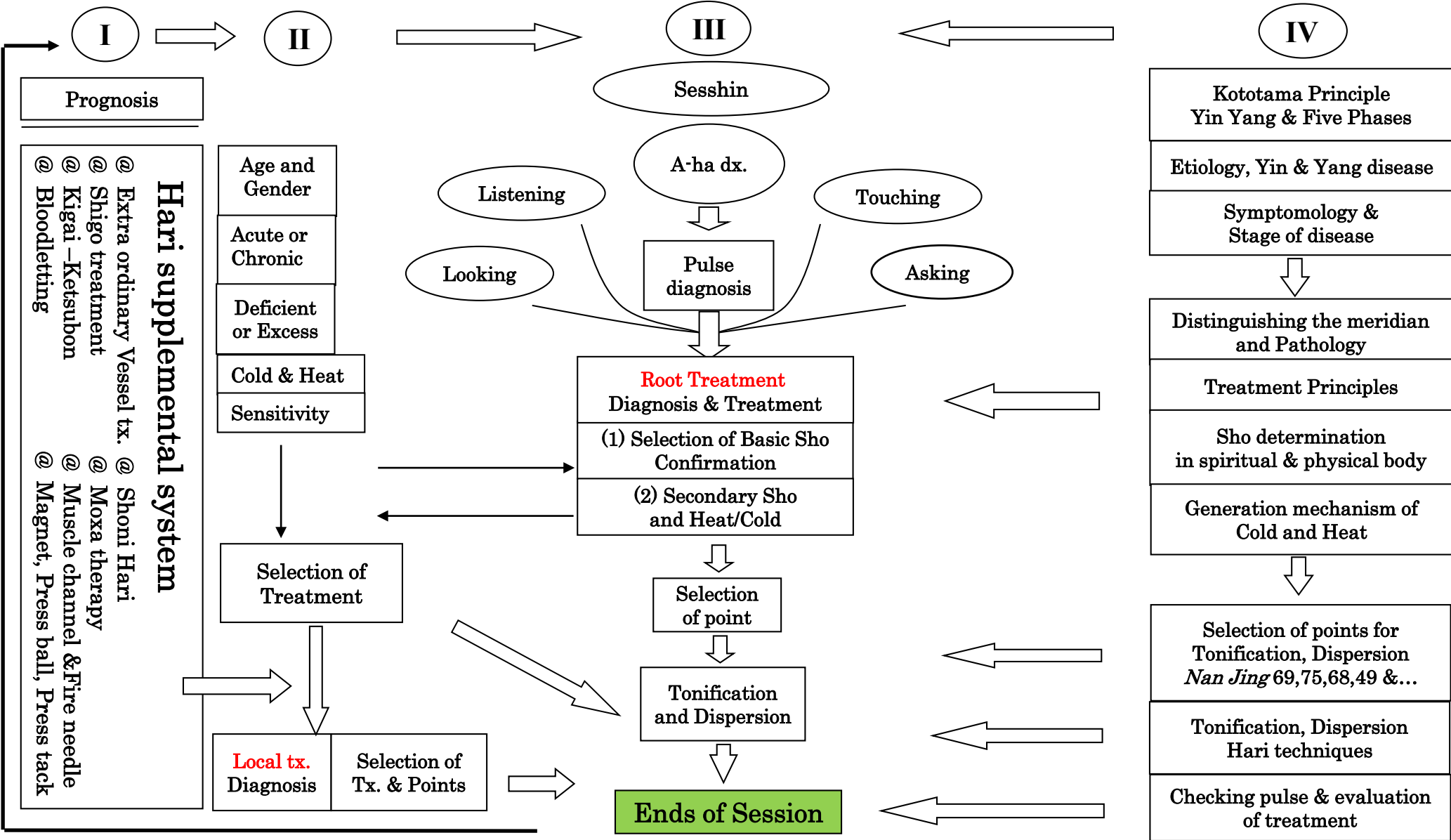
One Spirit

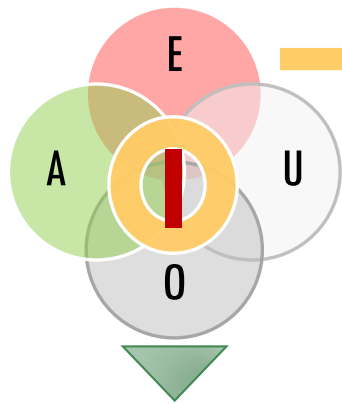
and



Four Souls

Flow Chart for Hari Treatment

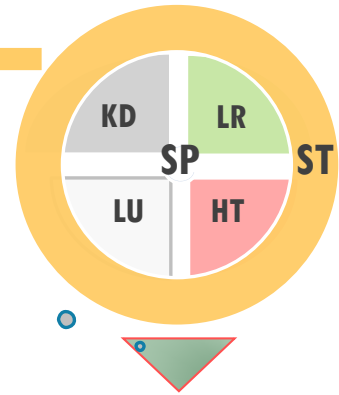




Heavens Ki/ Space Creation Will

Endogenous
Excessive Earthly Desire

Exogenous
EPI, Food, Drink, Fatigue, ...

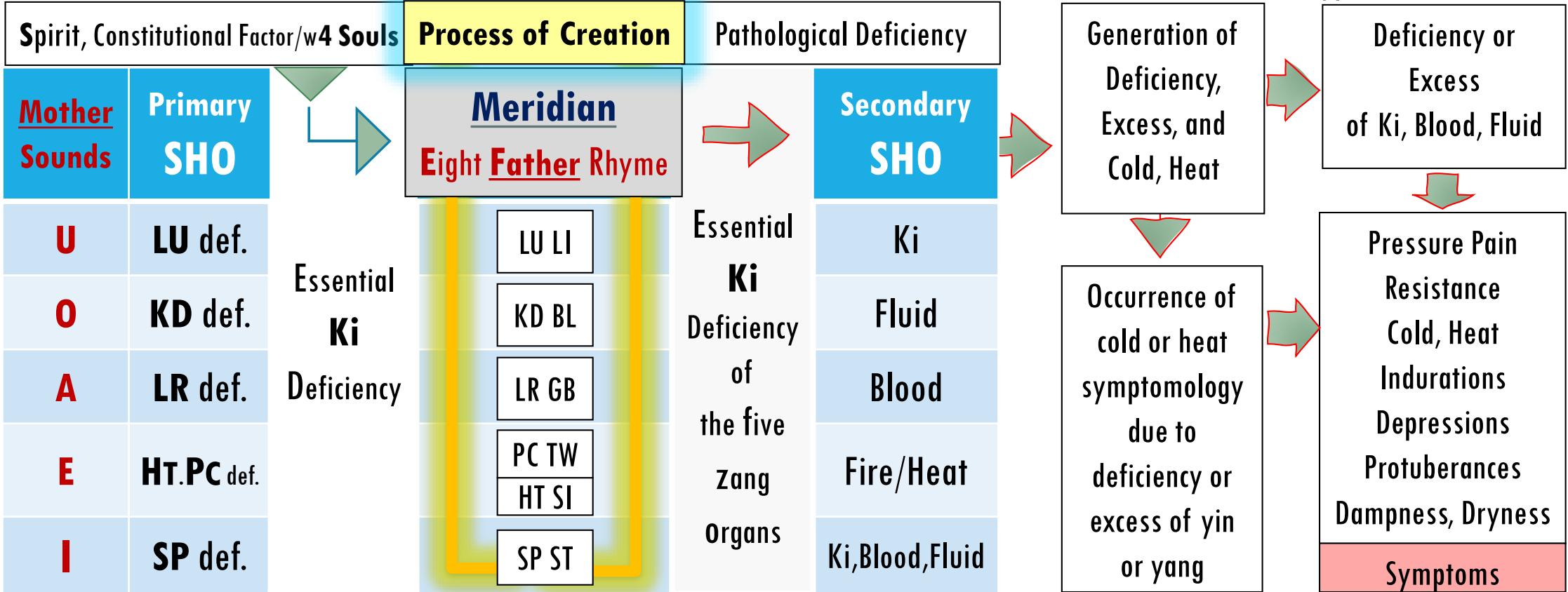


Yin disease

Yang disease

Fond of Life

Effects from Excess &,or Deficient type of Jaki



* **HARI**
DEFINITION

HARI is known as
the *Zuishō* (隨証) tx.,
which means Tx. is given by
following the **SHO**/ pattern of
imbalance in the Five dimensional,
Kototama system of Essential Ki
/Kami/Shen/space Will.

*HARI DEFINITION

Disease stems from
deficiency of Essential
Ki and
Jaki invasion

- ❖ **The** five organs, is the result of the creation from space Will (Essential Ki) and is in charge of storing the essence.
- ❖ **If** the essence is injured, the [body's] defenses will be lost, resulting in yin deficiency. (Ling Shu, Chp. 8)
- ❖ **As** is understood from the above quotations, disease stems from deficiency of Essential Ki of the five organs.

***HARI**

**THREE
CORNERSTONES
OF HARI
PRACTICE**



Spiritual Medicine

(Essential **Ki**) **ONE** Spirit and Four Souls



Meridian Medicine

(**Ki**) in **meridian** “Breath” “Mind, Senses”



Physical Medicine

Pathological (**Ki**) effects on Physical Body

*1. SPIRITUAL BODY

THE MOST
IMPORTANT
WORKSPACE IN
THE HARI

Spiritual Medicine

The energy of **Ho** (tonification/I-Ne) is the creation of the universe:

Sho-Diagnosis (**AHa dx.**) and Hari treatment (**I-Ne**) are one and the same.

Natural undulation on your life

*2. MERIDIAN
KI
BODY

LIGHT, DRAGON IS
A MAGICAL IMAGE OF
MERIDIAN

A **COSMIC STRING**
IN AI SPACE.

Meridian Medicine

Meridian, a 5D illustration
in **AI** space shows the process (Ki-
breathe/ Eight Father Ki Rhyme) of the
creation from Spirit to body.

It is the locus of feelings
(**AI 愛-Love**) in a space of (I).

* **3. PHYSICAL
BODY**

AND
HARI
FUTOMANI SHINPO

Physical Medicine

Based on understanding of body's (**Ki**)
function, Physiology, Pathological and
Jaki effects on Physical Body.

Kototama Principle in Hari practice

“ God created man in his own image.”

(Gen.1:27).