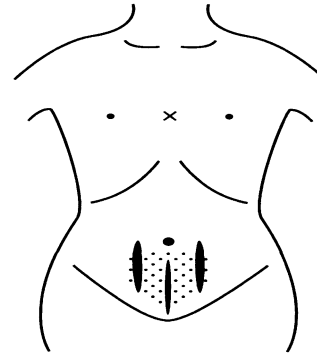


## VIII. Kidney Deficiency Heat Pattern Diagnosis and Treatment

*Heat is generated from deficiency fluids of the Kidney. Yin deficient heat pattern*

LR, GB heat	It's becoming to LU deficient LR excess. Ch. 75
HT, SI heat	Palpitation with Heart heat
SP, ST heat	Diabetes
LU, LI heat	Cough from LU heat
KI, BL heat	Heat in BL, Low back pain

Left Wrist		Right Wrist
Slippery - Excess	Distal	<b>Minute</b>
Slippery - Excess	Middle	Wiry
<b>Slippery - Deficient</b>	Proximal	Slippery - Deficient



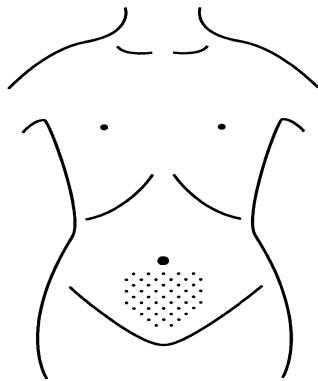
Kidney Deficiency Heat and Lung Deficiency Liver Excess Pattern			
Examination		Treatment	
Looking	Big, reddish-black ears. Balding. Bloating. Blackish skin. Edema of the legs. Redness between the eyebrows. Too much luster in the face.	Basic Points	Tonify LU-5, KI-7, KI-10, and KI-1.
		Liver Excess	Disperse LR-2 and LR-8.
Listening Smelling	Humble demeanor. Easily surprised. Quite if there is blood stasis.	Heart Heat	Tonify KI-2. Disperse PC-4.
		Spleen Heat	Disperse SP-8 and ST-36.
Questioning	Causes such as: working on one's feet; overindulgence in sex; chilling of the legs and lower back. Deterioration with chilling of the feet and in the winter. Heat vexation in the feet. Nocturnal urination. Palpitations. Diarrhea without abdominal pain. Hearty appetite.	Lung Heat	Disperse LI-2, LI-4, LU-5, and LU-6.
		Kidney Heat	Disperse BL-65 and BL-63.
Palpation	Loss of strength from the conception vessel inferior to the navel and tension in the Stomach channels to both side of the navel. Heat in the chest.	Supplementary Points	CV-3, CV-4, ST-25, C-12, CV-17, CV-14, BL-13, BL-23, BL-26, BL-28, BL-25
	The overall pulse is floating, slippery, and deficient, or possibly hollow. The right distal and left proximal positions are deficient at the deep level. The pulses of areas that have taken on heat are excess.		<b>For Lung Deficiency Liver excess:</b> CV-17, CV-12, ST-25, LR-14, GB-24, CV-5, BL-13, BL-18, BL-10, BL-23, BL-26, BL-25, and the Glomus Root Point

## IX. Kidney Deficiency Cold Pattern Diagnosis and Treatment

*Cold is produced with the deficiency of Lung ki and simultaneous deficiency of Kidney fluids and yang ki*

LR, GB cold	The yang ki of the Triple Warmer is also deficient
Ht, SI cold	The case is severe if the Heart becomes chilled.
SP, ST cold	St receive cold easily
LU cold	to be LU cold easily
KI, BL cold	Yang deficient in lower warmer

Left Wrist		Right Wrist
Soft	Distal	<b>Minute - Deficient</b>
Normal	Middle	Deficient
<b>Soft Deficient</b>	Proximal	Deficient



Kidney Deficiency Cold Pattern Examination		Treatment	
Looking	Blackish color around the eyes. Edema of the upper eyelids. Blackish lips. Edema of the lower limbs. Constitutionally small ears.	Basic Points	Tonify LU-9, LU-8, KI-3, and KI-7.
		Liver Cold	Tonify TW-4.
Listening Smelling	Small voice that lacks strength. Easily surprised.	Heart Cold	Tonify SI-4 and HT-7.
Questioning	Causes include: constitutionally tending to become cold; and chilling of the legs and lower back. Deterioration trigger by chilling and in the winter. Light eating despite being hungry. Coldness below the lower back. Loss of forceful urination. Loss of sexual stamina. Low back pain.	Spleen Cold	Tonify ST-42.
		Lung Cold	Tonify LU-7.
		Kidney Cold	Tonify KI-4, BL-64, and BL-59.
Palpation	The whole abdomen is flaccid, or the lower abdomen is protruding and flaccid. Pressure pain at BL-52.	Supplementary Points	CV-4, CV-5, CV-12, GB-25, LR-13, BL-13, BL-23, BL-22, BL-28
	The overall pulse is soft or hollow and slow. The right distal and left proximal positions are deficient at the deep level.		